

VISIcais****
Client Application Installation Guide



2213 Munn's Ave
Oakville
Ontario
Canada L6H 3M9
Tel: (905)-849-6744
Fax: (905)-842-1831
www.paisleysy.com
info@paisleysys.com

Copyright © 2001, 2002 by Paisley Systems Inc.

VISI~~ca~~is is a trademark of Paisley Systems Inc.

Other product and company names mentioned herein may be the trademarks, service marks, trade names, or registered trademarks of their respective owners. The names of companies, products, people, characters, and/or data mentioned herein are fictitious and are **not** intended to represent any real individual, company, product, or event, unless otherwise noted.

Paisley Systems Inc.
2213 Munn's Avenue
Oakville
Ontario
Canada L6H 3M9
info@paisleysys.com
support@paisleysys.com
www.paisleysys.com
Telephone: (905)-849-6744
Fax: (905)-842-1831

THIS GUIDE DOES NOT COVER THE INSTALLATION, SETUP and CONFIGURATION OF VISI~~ca~~is SERVERS. FOR DETAILS ON THESE ITEMS PLEASE SEE THE VISI~~ca~~is Servers Setup and Configuration Guide.

Document last updated: **8/14/2003 3:43 PM**

Table of Contents

[Object of this Document](#)

[Assumptions](#)

[How to use this guide](#)

[How this guide is organized](#)

[Icons Used in this Guide](#)

[System Requirements](#)

[Installing the VISIcais Client Application](#)

[Contact Information](#)

1. Object of this Document

The object of this document is to detail the installation of VISIcais Client Application.

2. Assumptions

When writing this Guide, we have made a few assumptions:

- You are a System or Database Administrator
- The VISIcais Servers are installed, and configured and a suitable network is in place (see VISIcais Servers Setup and Configuration Guide)
- You are a law enforcement officer, investigator, or involved in corporate security
- You have a basic understanding of how organizations, people, vehicles, etc., tend to relate in investigative information
- You understand the basics of a computer, including the use of a mouse
- You understand the basics of a Microsoft Windows Operating System (Win98, NT, 2000, XP)

You do not need to be a genius in any of the above requirements to install VISIcais, but it does help to know where the on/off switch for the computer is and what happens when you 'click' on the right hand mouse button.

3. How to use this Guide

This Guide doesn't force you to *learn* anything about the VISIcais installation. Instead, treat this book as your installation reference guide. When you find you have to install VISIcais as a server or a client, you will find appropriate, step by step instructions.




4. How this Guide is organized

Everything is easier to find when it is well marked and signposted. The information in this book is no exception. It contains four main parts. You don't have to read and digest each chapter before moving on to the next – just look up the table of contents or index for your particular requirement.

The Guides main parts are as follows:

System Requirements
 Part 3: Installing VISIcais
 Part 4: Contact Information

5. Icons Used in this Guide

	TIP	Look for these icons. They point out a quick way of doing something or ideas based on experience from other users.
	REMEMBER	When you need a friendly reminder to do something you will see this icon.
	WARNING	When you need a warning not to do something – hopefully these are few and far between.

6. System Requirements

To successfully run the VISIcais application we suggest the minimum system requirements:

Client (for Network application)

- Pentium Processor Computer
- 256 Mbytes RAM (depending on Windows OS)
- 40+ Mbytes free disk space for installation, plus space to store local data
- Color monitor
- Mouse or Trackball
- Microsoft Internet Explore 4.01 with Service Pack 1 or later (both included)
- One of these operating systems: -
Microsoft Windows 98, NT, 2000, XP
- One of these database systems if using synchronization: -
MSDE 1
Microsoft SQL Server Desktop Engine 2000 (MSDE 2.0)
SQL Server Personal Edition

Server (for Network application)

- Pentium Processor Computer
- 256 Mbytes RAM (preferably 512Mbytes +)
- 40+ Mbytes free disk space for installation, plus space to store data
- Color monitor
- Mouse or Trackball
- Microsoft Internet Explore 4.01 with Service Pack 1 or later (both included)
- One of these operating systems: -
Microsoft Windows NT (Enterprise Edition with Service Pack 4 or later - Service Pack 4 included)
Microsoft Windows 2000 or XP
- One of these database systems: -
MSDE 1
MS SQL Server 7
MS SQL Server 2000

Single User Stand Alone System

- Pentium Processor Computer
- 256+ Mbytes RAM (depending on Windows OS)
- 40+ Mbytes free disk space for installation, plus space to store local data
- Color monitor
- Mouse or Trackball
- Microsoft Internet Explore 4.01 with Service Pack 1 or later (both included)
- One of these operating systems: -
Microsoft Windows 98, NT, 2000, XP
- One of these database systems: -
MSDE 1
Microsoft SQL Server Desktop Engine 2000 (MSDE 2.0)
SQL Server Personal Edition

7. Installing the VISIcais Client Application

Installation Overview

The VISIcais Client Application installation is a very straightforward process. The installation 'wizards' will guide you through each step. You can determine the modules you wish to install, where to install the application and your choice of database server.

The VISIcais Client can be installed 3 distinct ways:

- as a stand alone application using MSDE 2000 or SQL Server Personal Edition as the data engine
- as a client with direct access to a central server
- as an application with a "local" data engine that synchronize with the server. This allows mobile users to "take their data with them". This type of installation requires that MSDE or Microsoft SQL Server 7.0 or greater be already installed on the system.

Installing VISIcais Servers

Please refer to the VISIcais Servers Setup and Configuration Guide supplied for your organizations installation.

Installing the VISIcais Client Application

This section describes the installation of VISIcais Client Application only.

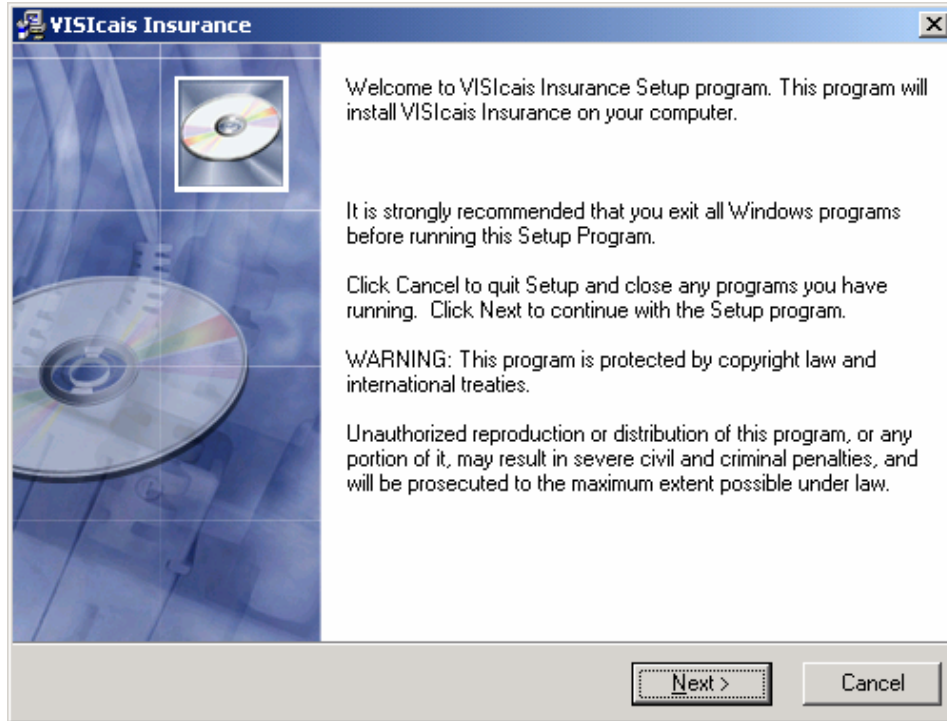
If you have a CD:

- Insert the CD into your CD-ROM drive
- If your computer has the Auto-run feature enabled the Installation Wizard shown in Page 7 will appear
- Follow the prompts in the Installation Wizard to install the components you require. If your computer does not have the Auto-Run feature enabled, double-click **My Computer**, and then double-click your CD-ROM drive
- Double-click the VISIcais folder
- Double-click **VISIcais Setup.exe** or **VISIcais Insurance Setup.exe** depending on the application you wish to install
- Follow the prompts in the Installation Wizard to install the components you require.

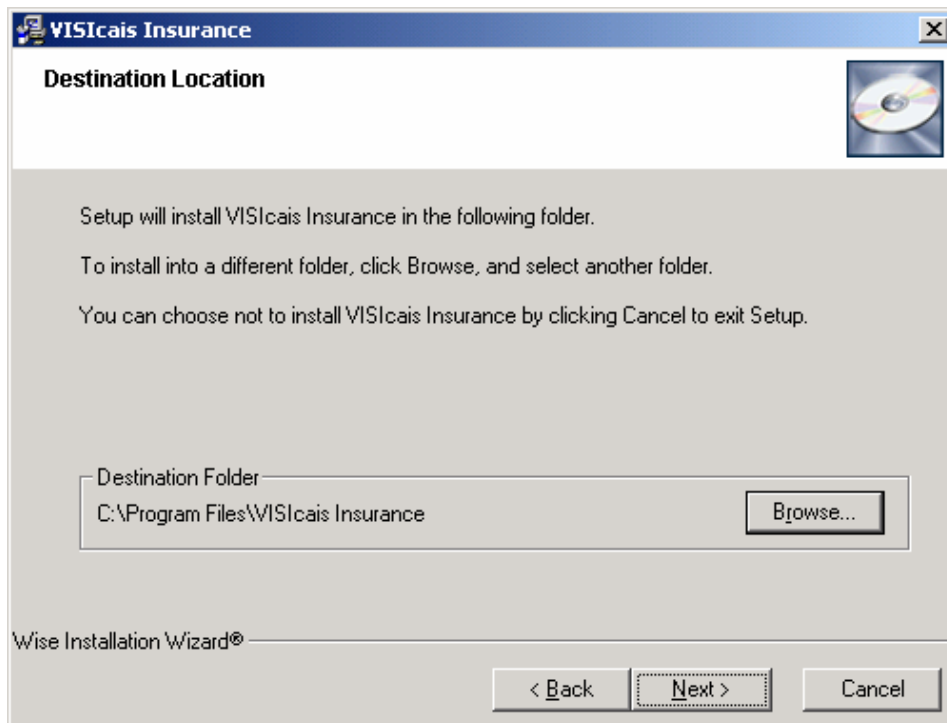
If you have downloaded from the Paisley website:

- Double-click **My Computer**
- Double-click the download location folder (i.e. where you downloaded the VISIcais application)
- Double-click the VISIcais folder
- Double-click **VISIcais Setup.exe** or **VISIcais Insurance Setup.exe** depending on the application you wish to install
- Follow the prompts in the Installation Wizard to install the components you require.

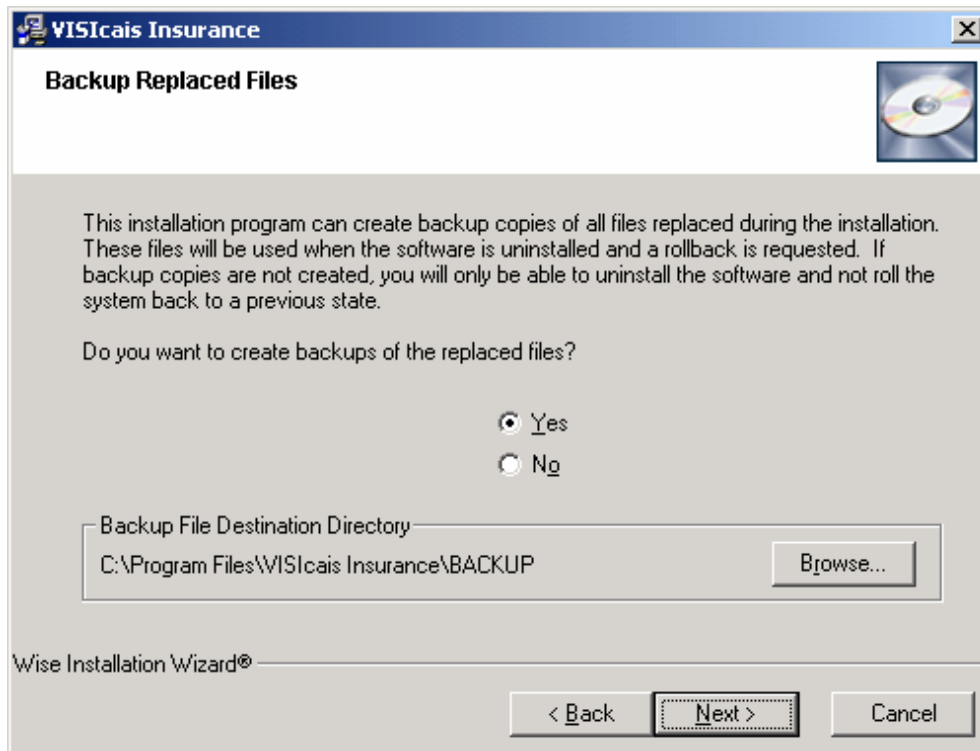
The following screen should appear:



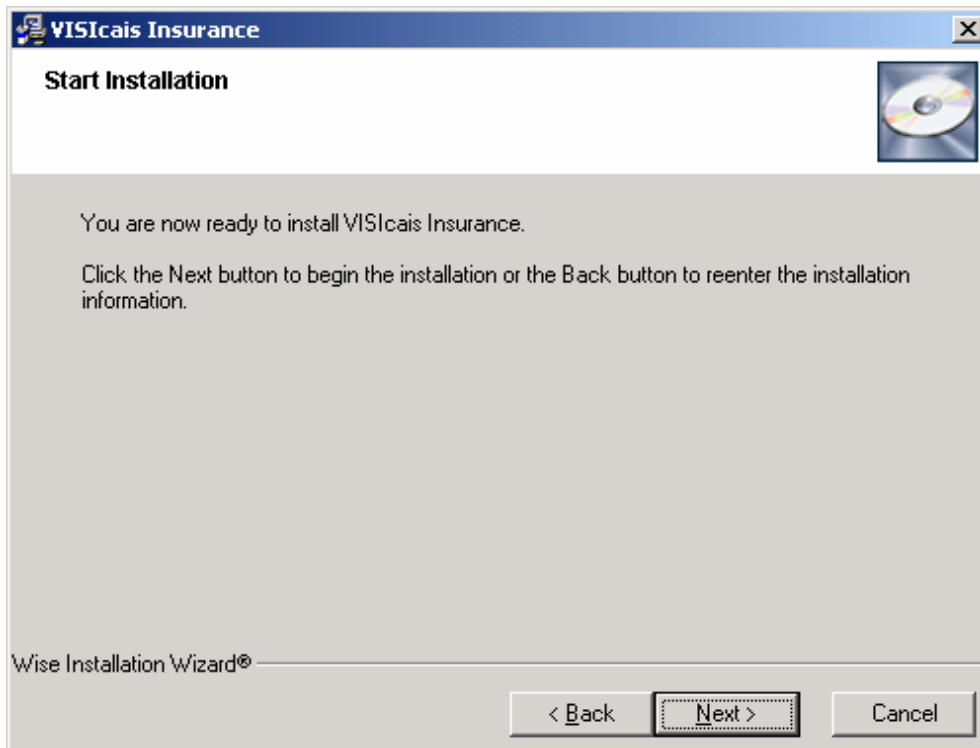
Click "Next" to proceed to the next dialog screen. You will be asked to confirm the installation destination.



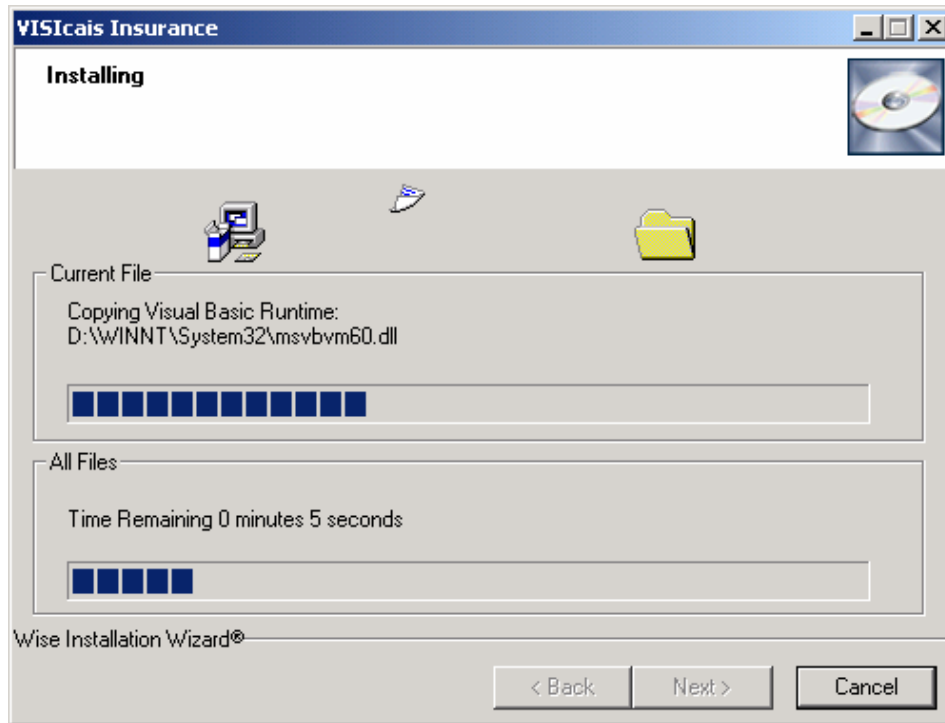
Accept the default destination unless you have a specific reason not to. Click "Next" to accept the destination shown and proceed to the next screen.



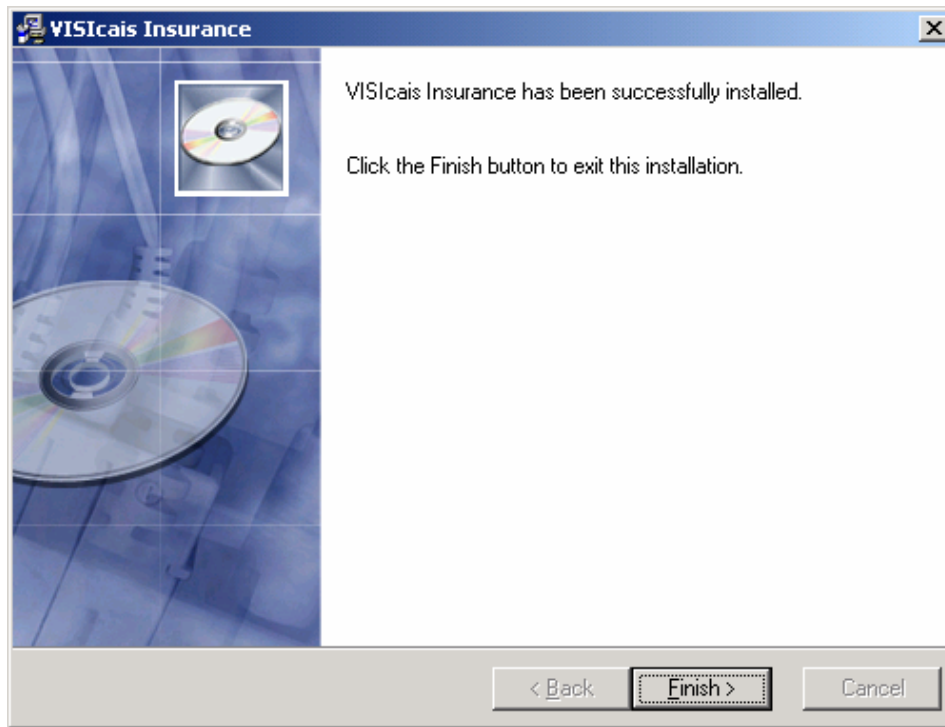
You will be asked if you wish to backup replaced files. Again accept the default of "Yes" unless you are absolutely certain that you don't wish to. Click "Next" to proceed.



To start the installation, click "Next" once again and the VISIcais application will be installed. You will be shown a progress dialog screen; this will take a short time.



When it is finished you should be given a message saying that the install was successful, click "Finish" to exit the installer. You may be prompted to reboot the computer at this point and it is recommended that you do.



You have now successfully installed the VISI^{cais} Client Application. You now need to install the Microsoft SQL Server Desktop Engine or SQL Server Personal Edition if you are synchronizing to a central server or have a stand alone desktop application. Please refer to the **VISI^{cais} Servers Setup and Configuration Guide** for complete details.

If your Database Servers have already been installed and configured, please refer to the **VISI^{cais} User Guide** to establish a database connection and begin using the application.

■ You may require Microsoft Client Access Licenses (CALs) to connect to MS SQL Server 7 or higher.

8. Contact Information

Contact information should you run into any difficulties.

Every effort has been made to ensure the accuracy of this Guide and the contents of the VISI^{cais} CD or download. Paisley Systems provides corrections and updates through the World Wide Web at the following address:

<http://www.paisleysys.com/Downloads/Guides/index.htm>

If you have any questions, comments, or ideas regarding this Guide, VISI^{cais} CD or product, please email or mail them to the following address:

Email

support@paisleysys.com

Regular Mail

Paisley Systems Inc.
Attn: Product Support
2213 Munn's Avenue
Oakville
Ontario
Canada L6H 3M9